

**HIBR****MARCEL LEEMANN PHYSICAL DANCE THEATER  
MAQAMAT DANCE THEATER****Technical rider****Contacts**

---

|             |                |                  |  |
|-------------|----------------|------------------|--|
| co-director | Marcel Leemann | +41 79 615 09 05 | <a href="mailto:marcelleemann@sunrise.ch">marcelleemann@sunrise.ch</a>       |
| co-director | Omar Rajeh     |                  |  |
| lightdesign | Jonas Bühler   | +41 79 252 91 36 | <a href="mailto:jonas.buhler@gmail.com">jonas.buhler@gmail.com</a>           |
| sound       | Pablo Palacio  | +34 659 95 80 80 | <a href="mailto:acusmatrix@pablopalacio.com">acusmatrix@pablopalacio.com</a> |

## Team on tour

---

7 dancers  
2 choreographers  
1 light technician  
1 sound technician

## Stage

---

general requirement

\_stage and rigg will be clear before beginning of setup.

required

\_minimum 14m per 14m stage, 7m height to the grid.

\_white clean dance floor 12x10m and enough black to make a frame around the white

\_black box with curtains.



## Light

---

### general requirement

\_all lighting devices will be provided with adapted cables, safety and filter frames.  
 \_the desk will be installed in the audience for focus and rehearsal.  
 \_the desk needs to be installed center at the end row of the audience for the show.  
 No glass between stage and operator. Space is needed for 2 computers along the desk.

### required

\_desk: actual programmable desk with softpatch, cues with manual and auto transfer and min 24 submasters. (ETC Express is perfect).

\_dmx: 1 dmx universe. Please provide 1 dmx (5pins) cable of 2m aprox.

\_dimmers: 60x 2KW dimmers. All power dimmers must be the same brand with same curve settings.

\_lights: 60 Pars64 VNSP (cp60) **All PARS must be same model/brand** (eventually 30 VNSP and 30 NSP lamps is possible).

\_pipes: 4x 9m pipes/fly with cables or bars to fix 2m (min) under the rig  
 4x 10m pipes/fly with cables or bars to fix 2.2m (min) under the rig.  
 Structure hanging will be realised according to safety rules from the venue theatre. We advise to do it on rigid bars. It is fundamental that the bars don't move nor tilt.

\_clamps: 28x light clamps (type Robert Juliat or similar) for bouncers.  
**All clamps must be the same type and size**

### provided by company

|                        |          |   |
|------------------------|----------|---|
| _computers:            | 1        | laptop  |
|                        | 1        | dmx merger                                      |
| _hardware              | 28       | cardboard bouncers                              |
| <b>attached files:</b> | <b>1</b> | <b>light plot pdf</b>                           |
|                        | <b>1</b> | <b>Cross section pdf for structure building</b> |

**A proper light plan will be set for each performing place after contact with the stage's technical manager. Thank you for sending a dxf/dwg file.**



## Sound

---

general requirement

\_the mixing desk will be placed in the audience for soundcheck.  
\_the desk needs to be installed center on the end row of the audience for the show.  
No glass between stage and operator. Space is needed for 1 computer along the desk.

required

\_Octophonic loudspeaker array. All speakers must be same brand and type.

\_PA monitoring 8 channels (Yamaha 01V is perfect)

provided by company

\_1 laptop with soundcard

## Schedule

---

|        |  |   |
|--------|--|---|
| _day 1 | 09H-13H<br>14H-18H<br>19H-23H            | setup<br>setup<br>focus   |
| _day 2 | 09H-13H<br>14H-18H<br>18H-19H<br>20H-21H | light/sound settings, spacing<br>spacing, rehearsal<br>stage cleaning<br>show |
| _day 3 | 09H-13H<br>14H-18H<br>18H-19H<br>20H-21H | wardrobe cleaning<br>warmup<br>stage cleaning<br>show                         |

## Technical staff

---

general requirement

\_this list does not include the touring crew.

\_hosting crew should be the same during our complete stay and are supposed to be familiar with the stage and devices.

### Required

|        |           |  |
|--------|-----------|--|
| _day 1 | morning   | 1 stage manager<br>1 light manager<br>2 light technicians<br>2 stage technicians                   |
|        | afternoon | 1 stage manager<br>1 stage technician<br>1 light manager<br>2 light technicians<br>1 sound manager |
|        | evening   | 1 stage manager<br>1 light manager<br>1 light technician<br>1 sound manager                        |

|        |           |   |
|--------|-----------|---|
| _day 2 | morning   | 1 stage manager<br>1 light manager<br>1 sound manager<br>1 light technician |
|        | afternoon | 1 stage manager<br>1 light manager<br>1 sound manager                       |
|        | show      | 1 stage manager<br>1 light manager<br>1 sound manager                       |
| _day 3 | morning   | 1 dresser for wardrobe service  |
|        | afternoon | 1 stage or light manager  |
|        | show      | same as day 2   |
|        | take down | same as afternoon day 1   |

### **Dressing room**

---

We need wardrobe for 7 dancers, it should be close to the stage, heathen, equipped with mirrors, showers with hot water, towels and doors with lockers. There will be non sparkling water and a small and varied catering (including fresh fruits, dry meat, sandwiches, cereals etc and several with and without alcohol drinks. All local specialties are very welcome) for the dancers and touring crew during the entire stay. A warm and healthy meal (with a meat and vegetarian choice possibility) is expected after each show and working day for the complete team.



## Notes

---

This rider could be subject to some changes according to the venue theatres. Please let us know with minimum 3 month anticipation if you are not able to provide any object described in this document, in order to ensure a good running of our show.

Don't hesitate to get in touch with our staff for any question.





HIBR

13/02/2014

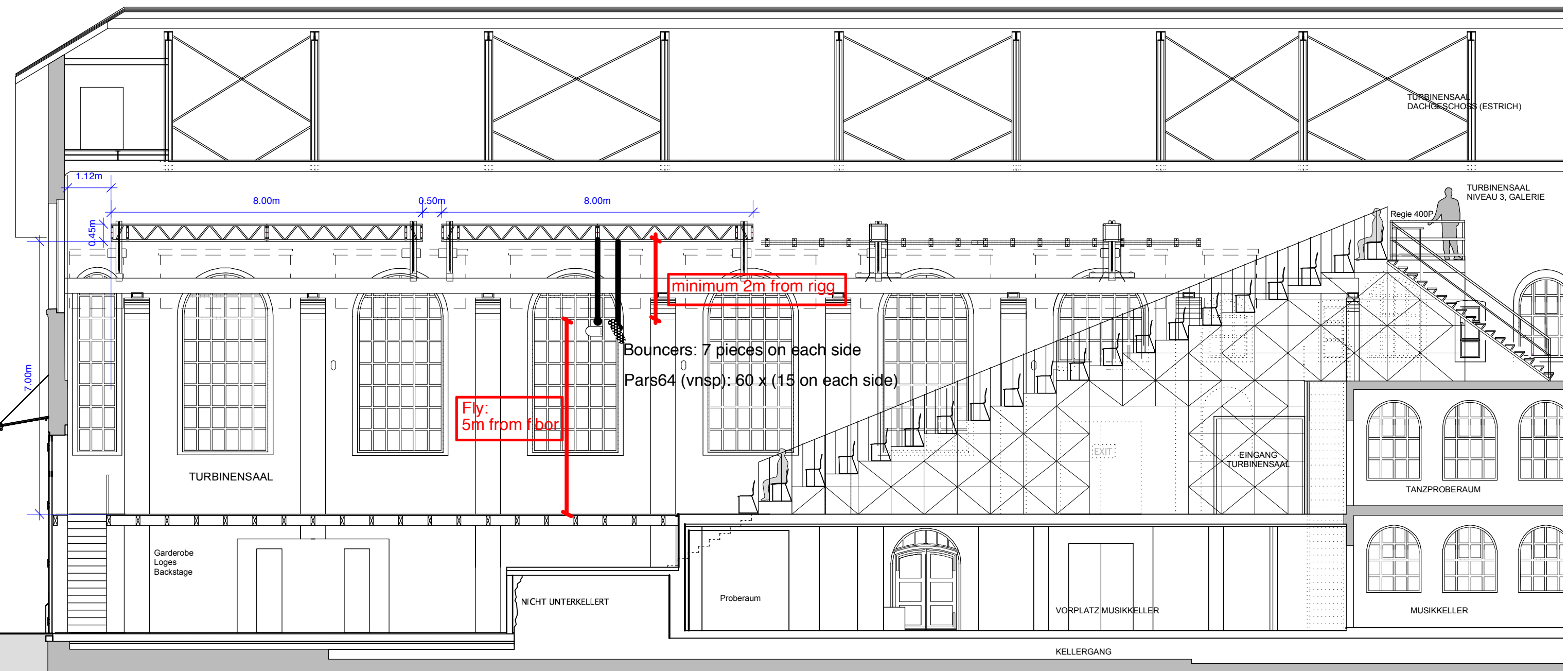
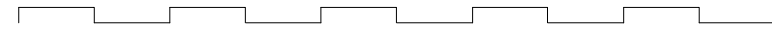
Dampzentrale Bern, Switzerland

Direction  
Design

Leemann / Rajeh  
Jonas Bühler

0m

10m



TURBINENSAAL  
DACHGESCHOSS (ESTRICH)

TURBINENSAAL  
NIVEAU 3, GALERIE

Regie 400P

minimum 2m from rigg

Bouncers: 7 pieces on each side  
Pars64 (vnsp): 60 x (15 on each side)

Fly:  
5m from floor

TURBINENSAAL

Garderobe  
Loges  
Backstage

NICHT UNTERKELLERT

Proberaum

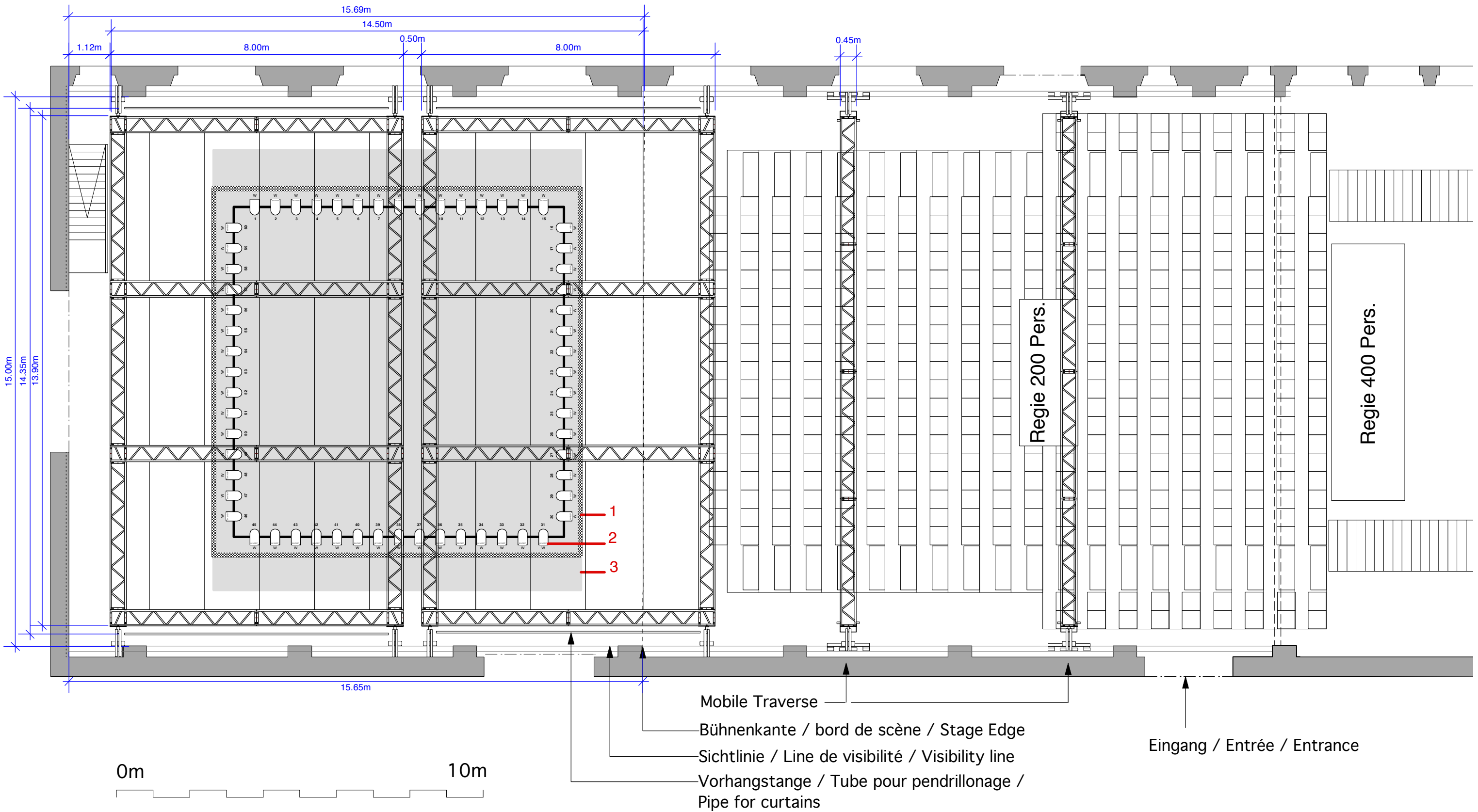
VORPLATZ MUSIKKELLER

EINGANG  
TURBINENSAAL

TANZPROBERAUM

MUSIKKELLER

KELLERGANG



**HIBR** 13/02/2014  
 Dampzentrale Bern, Switzerland  
 Direction Design Leemann / Rajeh  
 Jonas Bühler

**1**  
 bouncers: 4x7  
 1.4m each. on clamps.  
 Fly: 4.8m from f bor  
 minimum 2m under the rigg

**2**  
 Pars VNSP: 60 channels  
 Fly: 5m from f bor  
 minimum 2.2m under the rigg

**3**  
 White dance f bor  
 10x12m  
 black frame around